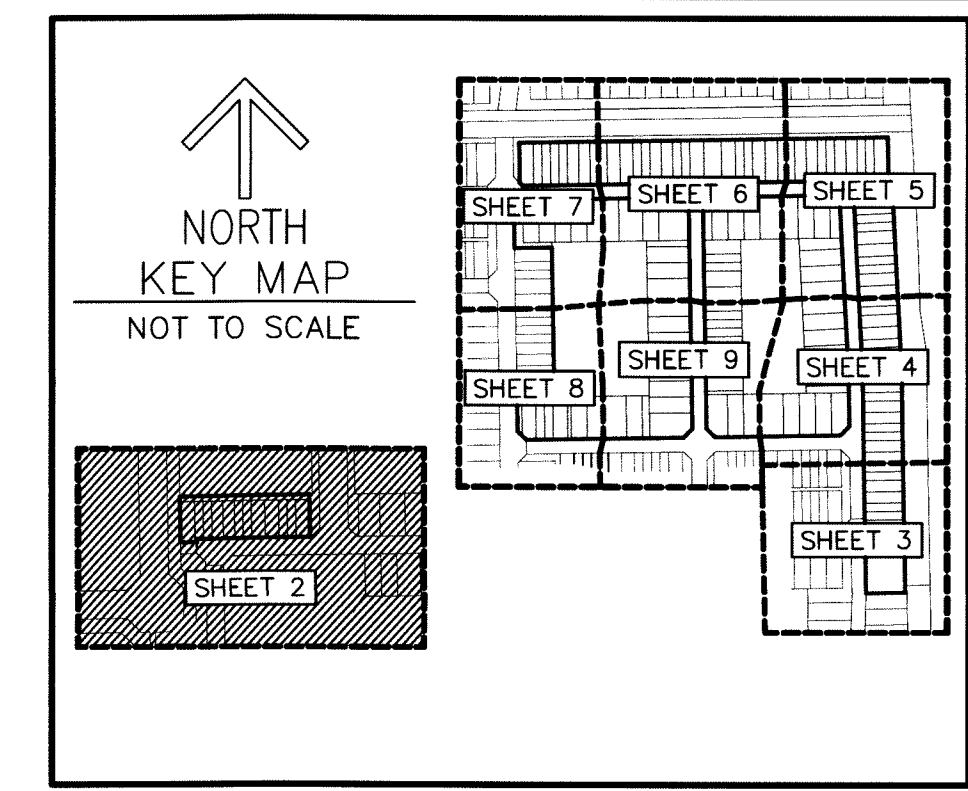


THIS INSTRUMENT PREPARED BY  
 DAVID P. LINDLEY  
 OF  
**CAULFIELD and WHEELER, INC.**  
 SURVEYORS - ENGINEERS - PLANNERS  
 7900 GLADES ROAD, SUITE 100  
 BOCA RATON, FLORIDA 33434 - (561)392-1991  
 CERTIFICATE OF AUTHORIZATION NO. LB3591

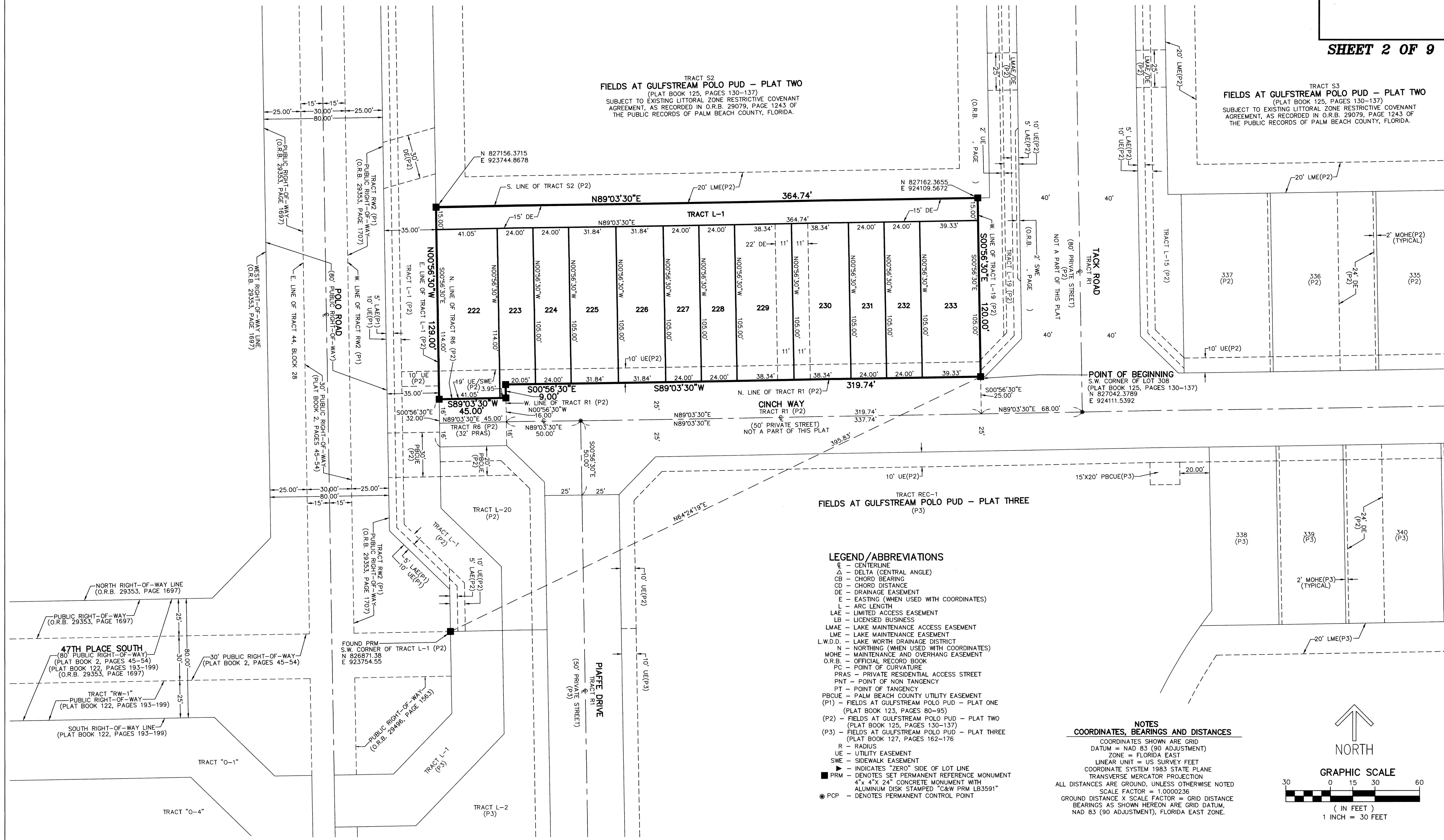
# FIELDS AT GULFSTREAM POLO PUD - PLAT FOUR

A PLANNED UNIT DEVELOPMENT  
 BEING A REPLAT OF LOTS 77 THROUGH 120, LOTS 135 THROUGH 220, LOTS 299 THROUGH 308, TRACTS L-6 THROUGH L-12, TRACTS S4, S5 AND REC,  
 FIELDS AT GULFSTREAM POLO PUD - PLAT TWO, AS RECORDED IN PLAT BOOK 125, PAGES 130 THROUGH 137,  
 TOGETHER WITH  
 TRACT S10, FIELDS AT GULFSTREAM POLO PUD - PLAT THREE, AS RECORDED IN PLAT BOOK 127, PAGES 162 THROUGH 176,  
 ALL OF THE PUBLIC RECORDS OF PALM BEACH COUNTY, FLORIDA.  
 LYING IN SECTION 29, TOWNSHIP 44 SOUTH, RANGE 42 EAST, PALM BEACH COUNTY, FLORIDA



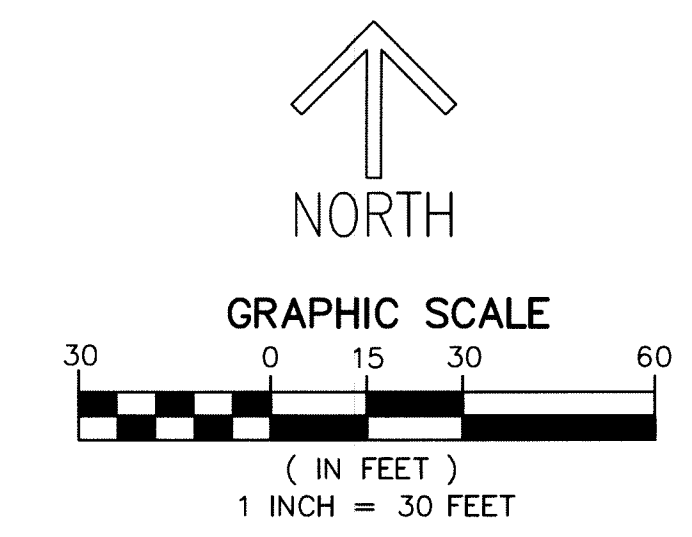
# 155

SHEET 2 OF 9



- LEGEND/ABBREVIATIONS**
- ☉ - CENTERLINE
  - Δ - DELTA (CENTRAL ANGLE)
  - CB - CHORD BEARING
  - CD - CHORD DISTANCE
  - DE - DRAINAGE EASEMENT
  - E - EASTING (WHEN USED WITH COORDINATES)
  - L - ARC LENGTH
  - LAE - LIMITED ACCESS EASEMENT
  - LB - LICENSED BUSINESS
  - LMAE - LAKE MAINTENANCE ACCESS EASEMENT
  - LME - LAKE MAINTENANCE EASEMENT
  - L.W.D.D. - LAKE WORTH DRAINAGE DISTRICT
  - N - NORTHING (WHEN USED WITH COORDINATES)
  - MOHE - MAINTENANCE AND OVERHANG EASEMENT
  - O.R.B. - OFFICIAL RECORD BOOK
  - PC - POINT OF CURVATURE
  - PRAS - PRIVATE RESIDENTIAL ACCESS STREET
  - PNT - POINT OF NON TANGENCY
  - PT - POINT OF TANGENCY
  - PBCUE - PALM BEACH COUNTY UTILITY EASEMENT
  - (P1) - FIELDS AT GULFSTREAM POLO PUD - PLAT ONE (PLAT BOOK 123, PAGES 80-95)
  - (P2) - FIELDS AT GULFSTREAM POLO PUD - PLAT TWO (PLAT BOOK 125, PAGES 130-137)
  - (P3) - FIELDS AT GULFSTREAM POLO PUD - PLAT THREE (PLAT BOOK 127, PAGES 162-176)
  - R - RADIUS
  - UE - UTILITY EASEMENT
  - SWE - SIDEWALK EASEMENT
  - - INDICATES "ZERO" SIDE OF LOT LINE
  - PRM - DENOTES SET PERMANENT REFERENCE MONUMENT 4" x 4" x 24" CONCRETE MONUMENT WITH ALUMINUM DISK STAMPED "C&W PRM LB3591"
  - PCP - DENOTES PERMANENT CONTROL POINT

**NOTES**  
**COORDINATES, BEARINGS AND DISTANCES**  
 COORDINATES SHOWN ARE GRID  
 DATUM = NAD 83 (90 ADJUSTMENT)  
 ZONE = FLORIDA EAST  
 LINEAR UNIT = US SURVEY FEET  
 COORDINATE SYSTEM 1983 STATE PLANE  
 TRANSVERSE MERCATOR PROJECTION  
 ALL DISTANCES ARE GROUND, UNLESS OTHERWISE NOTED  
 SCALE FACTOR = 1.0000236  
 GROUND DISTANCE X SCALE FACTOR = GRID DISTANCE  
 BEARINGS AS SHOWN HEREON ARE GRID DATUM,  
 NAD 83 (90 ADJUSTMENT), FLORIDA EAST ZONE.



NORTH